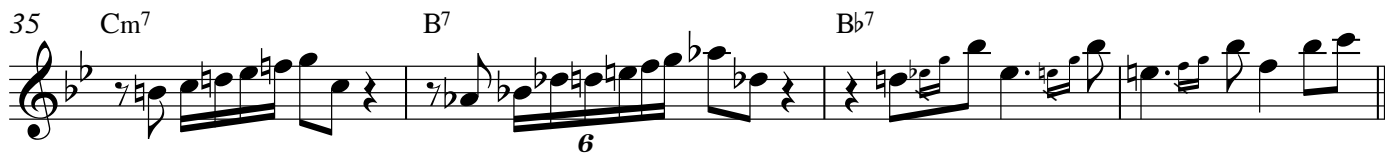
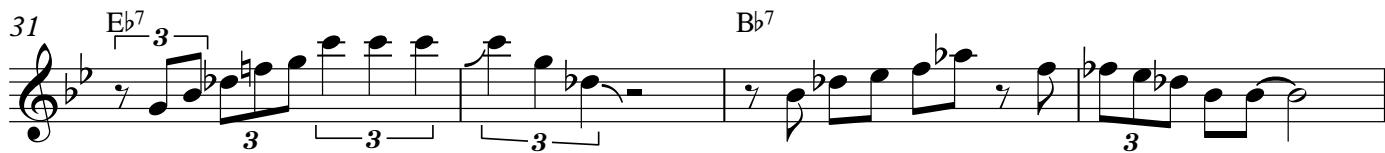
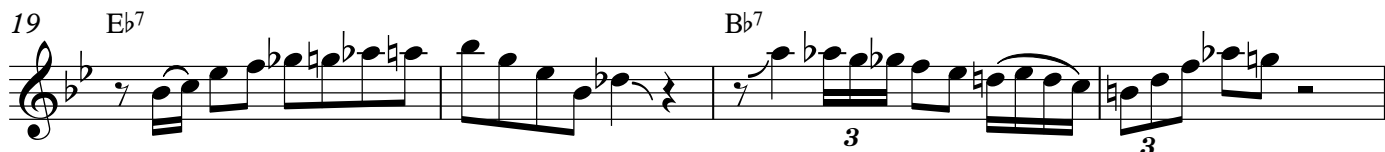
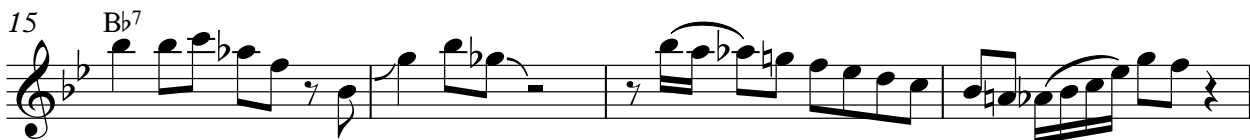
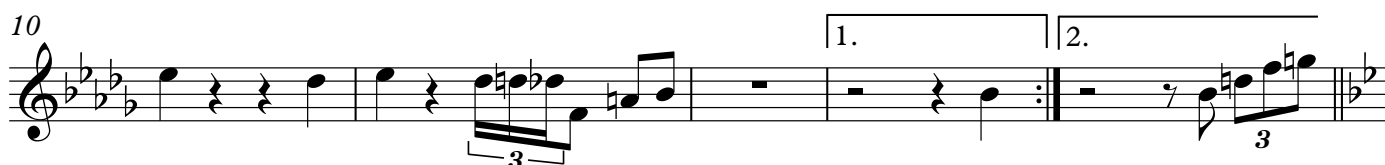


Dig Dis

Solo by Hank Mobley from his 1960 recording *Soul Station*

Hank Mobley

♩=130



39 Bb^7 Eb^7 Bb^7

43 Eb^7 $E^{\circ 7}$ Bb^7 $G7(b9)$

47 Cm^7 F^7 Bb^7 F^7

51 Bb^7 Eb^7 Bb^7

55 Eb^7 $E^{\circ 7}$ Bb^7 $G7(b9)$

59 Cm^7 F^7 Bb^7 F^7

63 Bb^7 Eb^7 Bb^7 Eb^7

68 $E^{\circ 7}$ Bb^7 $G7(b9)$

71 Cm^7 F^7 Bb^7 F^7

75 Bb^7 Eb^7 Bb^7

Detailed description of the musical score: The score is written for guitar in a key signature of two flats (Bb major / Eb minor). It consists of ten staves of music. The first staff (measures 39-42) features chords Bb7, Eb7, and Bb7. The second staff (measures 43-46) features Eb7, E°7, Bb7, and G7(b9). The third staff (measures 47-50) features Cm7, F7, Bb7, and F7. The fourth staff (measures 51-54) features Bb7, Eb7, and Bb7. The fifth staff (measures 55-58) features Eb7, E°7, Bb7, and G7(b9). The sixth staff (measures 59-62) features Cm7, F7, Bb7, and F7. The seventh staff (measures 63-67) features Bb7, Eb7, Bb7, and Eb7. The eighth staff (measures 68-70) features E°7, Bb7, and G7(b9). The ninth staff (measures 71-74) features Cm7, F7, Bb7, and F7. The tenth staff (measures 75-78) features Bb7, Eb7, and Bb7. Technical markings include triplets (3), quintuplets (5), and a quintuplet with an 'x' over it. There are also various slurs and accents throughout the piece.

79 Eb7 Eo7 Bb7 G7(b9)

83 Cm7 F7 Bb7 F7

87 Bb7 Eb7 Bb7

90 Eb7 Eo7

93 Bb7 G7(b9) Cm7

96 F7 Bb7 F7

99 Bb7 Eb7 Bb7

102 Eb7 Eo7

105 Bb7 G7(b9) Cm7

108 F7 Bb7 F7 Bb7